



# 3CTN G.A.P.P Webinar Remote Monitoring

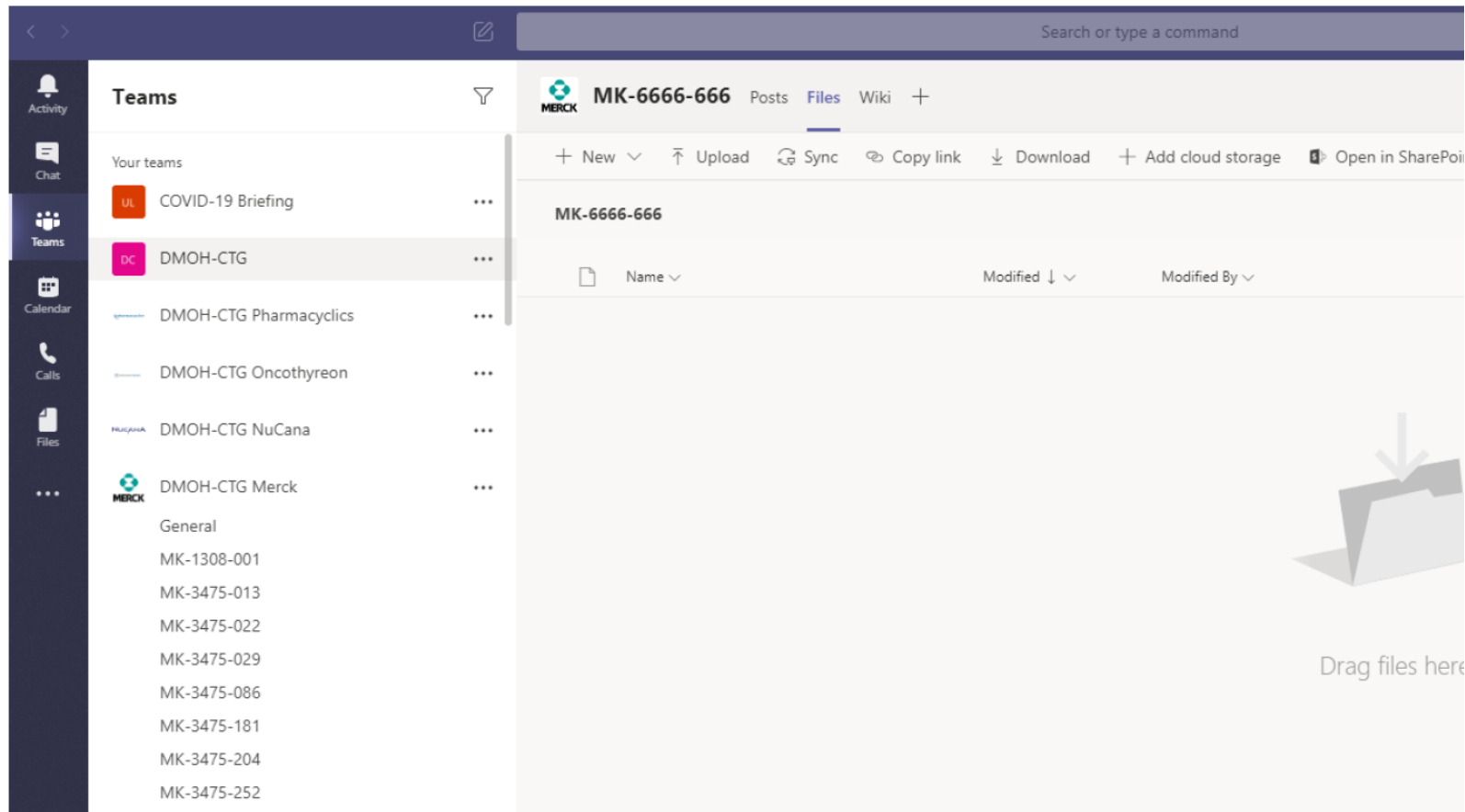
Shrutakirti Kulkarni  
Susanna Sellmann

# Objectives

- Remote Monitoring
  - Short term
  - Long term
  - Future Directions
- Sponsor/CRO reception to remote monitoring
- Site benefits and challenges

# Remote Monitoring

- MStTeams Platform



# Remote Monitoring

## eReg File Pt Source

The screenshot displays a SharePoint document library for a private group named "DMOH-CTG ABCDEF Pharma Inc." with 7 members. The interface includes a left-hand navigation pane with options like Home, Documents, and Shared with us. The main area shows a list of folders under the path "Documents > ABCDEF > External". A context menu is open over the list, with the "Alert me" option circled in red. The "Properties" pane on the right shows the current folder's name as "External".

DMOH-CTG ABCDEF Pharma Inc.  
Private group

Not following  
7 members

Home  
Conversations  
Documents  
Shared with us  
Notebook  
Pages  
Site contents  
Recycle bin  
Edit

+ New  
Upload  
Edit in grid view  
Share  
Copy link  
Sync  
Download  
Export to Excel  
All Documents

Documents > ABCDEF > External

Name	Modified	Modified By
02 Research Ethics	June 30	zdis-Gong, Teng
03 Regulatory	June 30	zdis-Gong, Teng
04 Protocol (Current and Archive)	June 30	zdis-Gong, Teng
05 Investigator's Brochure (Current and Arc...	June 30	zdis-Gong, Teng
06 Informed Consent Forms (Current and A...	June 30	zdis-Gong, Teng
07 Patient Materials (Current and Archive)	June 30	zdis-Gong, Teng
08 Manuals	June 30	zdis-Gong, Teng
09 SUSARs and SAEs	June 30	zdis-Gong, Teng

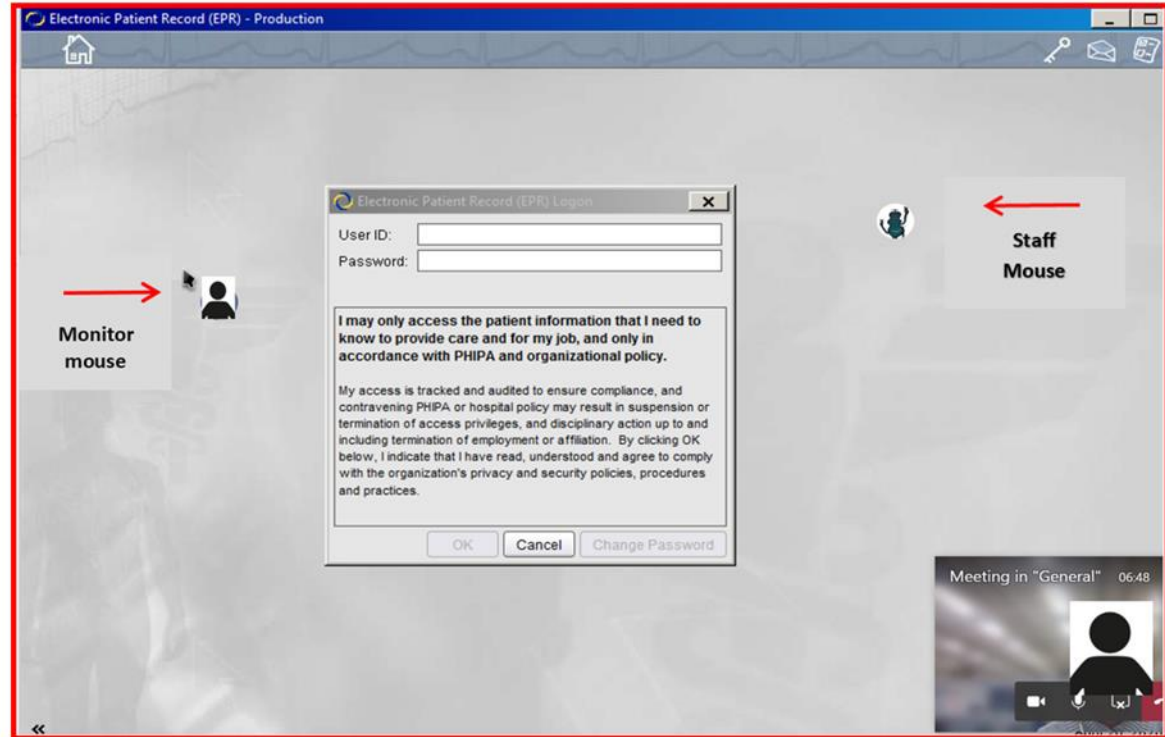
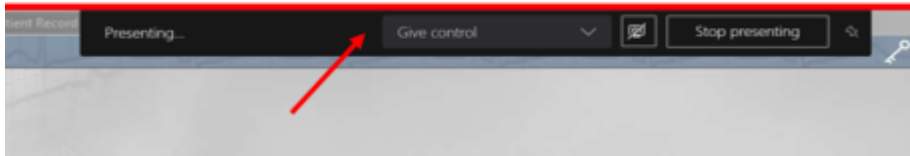
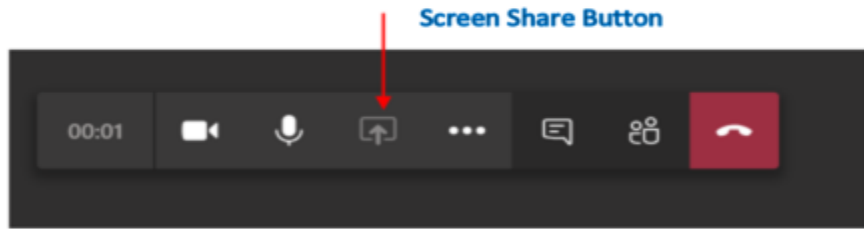
Alert me

Properties  
Title  
Enter value here  
Name \*  
External

More details

# Remote Monitoring

- Short Term Solution



- Long Term Solution

- Monitors have direct access to EPR via \*Clinical Apps portal

# Future Directions

- Improve EMR scanned area
  - Pilot launch next week
- Remote Monitoring as a standard

# Sponsor/CRO Reception

- Mixed Reception
- Use of platforms
- Sponsor policy/SOPs
- 21CFR11
- Requests for certified copies

# Practical Aspects

## Pros

- ↓ need for monitoring space

## Cons

- ↑ prep time=workload